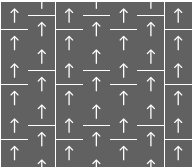


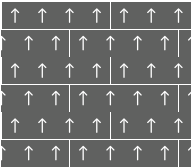
Technical Specification

Collection Name	Cosmos Biosphere Habitat
Yarn	PolyLux Synthetic Fibre
Construction	Multi Level Loop
Dyed Method	Solution Dyed
Gauge	1/10 inch
Stitches Per Inch	10 per inch
Pile Height	4.0 mm (+/-0.5 mm)
Total Height	8.0 mm (+/-0.5 mm)
Pile Weight	24 oz/sy (816 gm/sm)
Total Weight	143 oz/sy (4868 gm/sm +/- 300 gm/sm)
Primary Backing	Non-woven
Secondary Backing	Polyolefin Bac PRO
Packing	20 pcs(5 sm/box)
Colorfastness	Grade 5 - No Change (AATCC 16)
Flammability	Class I (ASTM E648)
Smoke Density	Passed (ASTM E662)
Static Propensity	≤3.5 kV (AATCC-134)
SGBC	Very Good

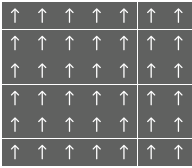
Installation Methods:



Ashlar



Brick

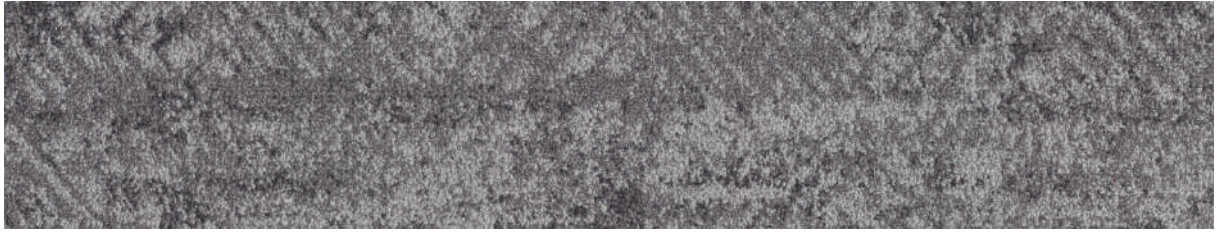


Monolithic

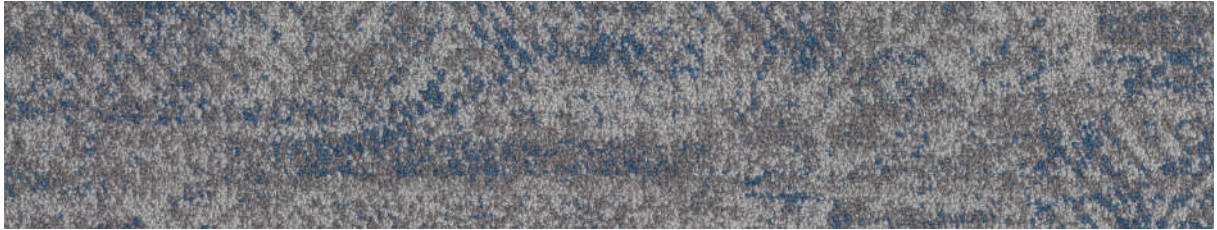
- * Specifications are based on average normal manufacturing tolerances, variations do not affect product performance. As with all quality carpets, slight variations in colors may occur from dye lot to dye lot.
- * Protective chair pads are recommended under office chairs with roller castors to preserve appearance retention and to avoid excessive wear.
- * As with all dyed products, colors are subject to dye lot variations.



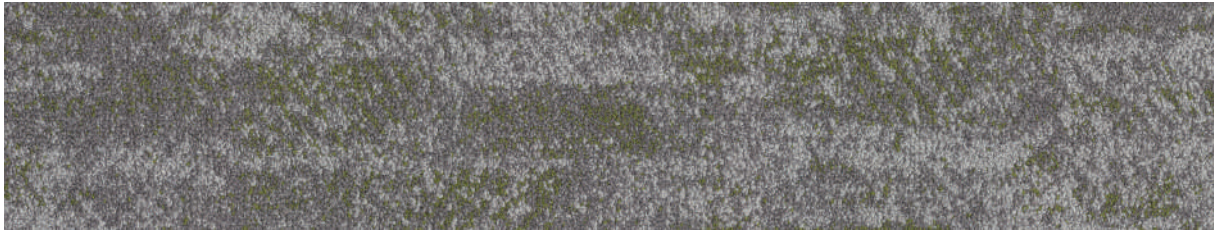
Biosphere (25 X 100 cm)



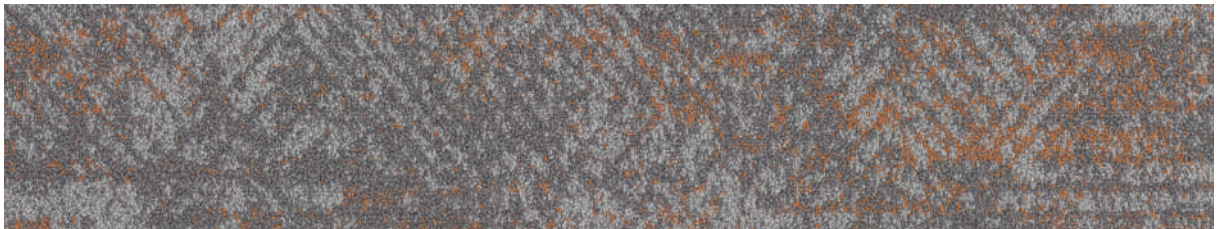
BIO301 Dusk



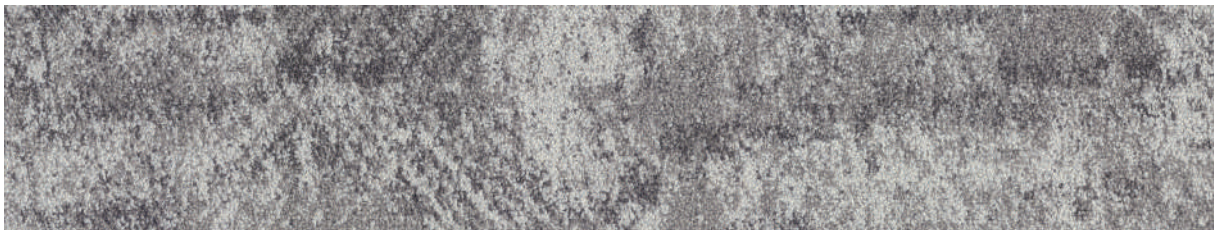
BIO302 Peninsula



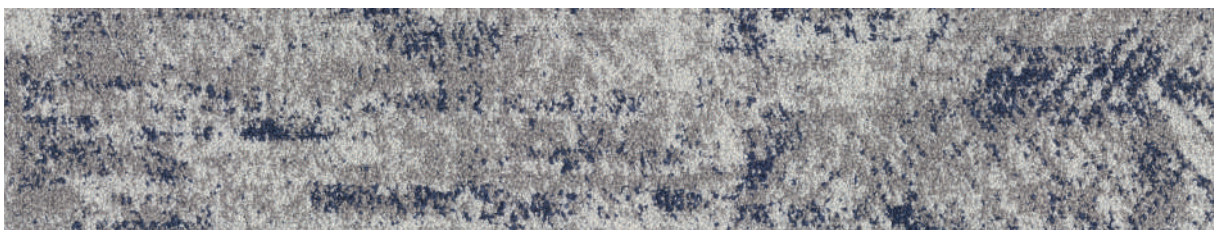
BIO303 Moss



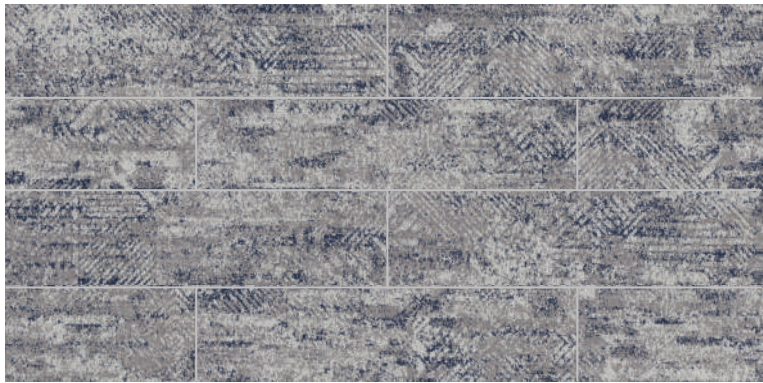
BIO304 Autumn



BIO401 Sterling



BIO402 Fountain



Collection Biosphere
Item Name BIO402 Fountain



Collection Biosphere
Item Name BIO401 Sterling