

LAVETTE™

BROADLOOM

100% SOLUTION DYED NYLON CARPET



Frieze



Broadloom



368 CARAMEL & 457 BROWN

PURE WOVEN LUXURY

Ideal for Medium Commercial & Heavy Hospitality Use in Hotel Suites, Hotel Corridors, Conference Rooms, Offices, Auditoriums, Schools, Restaurants, Retail Establishments, Etc.



456 SILVER ↶

700 DARK BLUE ↷

“

Crafted using 100% solution-dyed nylon for remarkable durability and colour retention.

Includes 35% recycled yarn content for environmental sustainability



456 SILVER & 457 BROWN



“

Anti-static technology integrated into our carpets effectively prevents the accumulation of static electricity, ensuring a more comfortable and safe indoor environment

700 DARK BLUE & 367 MEDIUM BEIGE



MIX
&
MATCH



- ↑ 800 BLACK & 367 MEDIUM BEIGE
- ↻ 361 ANTHRACITE & 456 SILVER

MIX
&
MATCH

501 BRIGHT RED ➡
368 CARAMEL & 501 BRIGHT RED ⬇



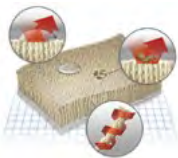
“Treated for stain resistance, maintaining its pristine appearance for a long time.”



Rain, mud, snow. Dogs, kids, guests. There's always something coming for your carpet – but when your carpet has built-in Scotchgard™ Protection, you're ready for it all.

How it works

The science behind the magic



What to know

What sets us apart



Repels
Spills stay on the surface.



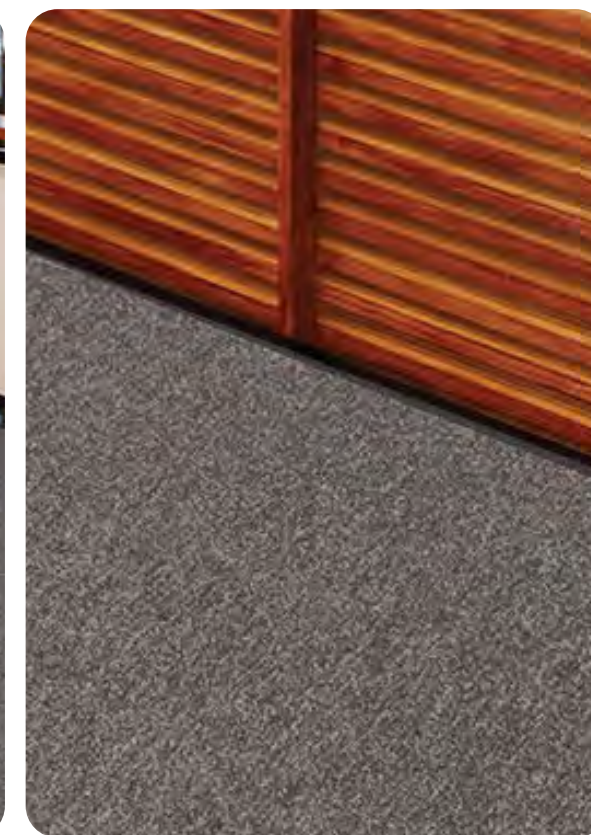
Resists
Dirt won't adhere to the fiber.



Protects
Deep down protection from top to bottom of the fiber.







LAVETTE COLOURS

Standard Roll Size 3.66m (+/-2%) x 30m (+/-2%)



069-CREAM



107 PLATINUM



361 ANTHRACITE



367 MEDIUM BEIGE



368 CARAMEL



452 SANDY BEIGE



456 SILVER



457 BROWN



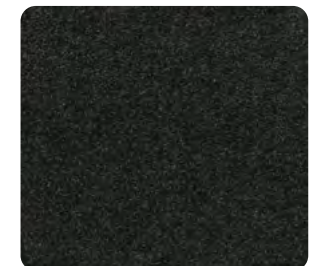
501 BRIGHT RED



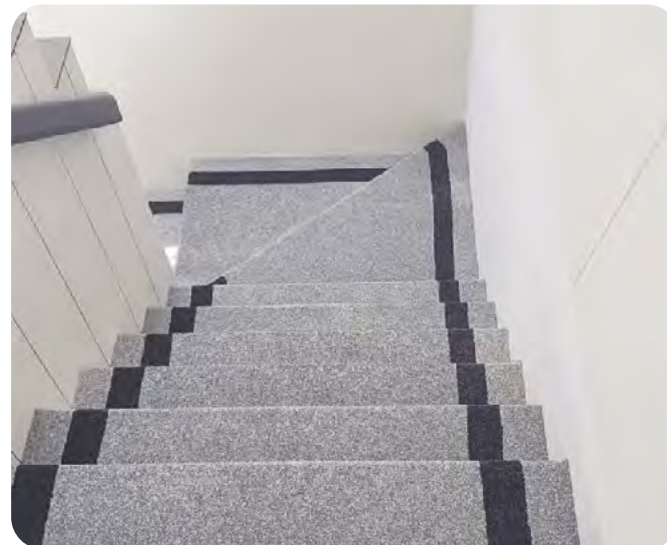
502 BURGUNDY



700 DARK BLUE



800 BLACK





502 BURGUNDY

LAVETTE Specifications

Construction	1/10" Tufted Cut Pile Frieze
Yarn Composition	100% Solution Dyed Nylon (with 35% recycled content)
Yarn Count	1440 / 2 ply
Tufted Pile Weight	Ca. 1085 g/m ² (32 oz/yd ²) (+/- 10%)
Total Weight	Ca. 1950 g/m ² (58 oz/yd ²) (+/- 10%)
Pile Height	Ca. 5.7 mm (+/- 0.5 mm)
Total Height	Ca. 8.2 mm (+/- 0.5 mm)
Density (APYD)	5133 oz/yd ³
Tuft Density	129,540 stitches/m ²
Stitch Rate	51 per 10 cm (13 per inch)
Primary Backing	PP Woven Cloth (7% recycled content)
Secondary Backing	ActionBac®
Standard Roll Size	3.66m (+/-2%) x 30m (+/-2%)
Stain, Oil & Water Resistance	3M Scotchgard™ Protector

Performance

(as tested by ITTS Inc. USA)

Stain Resistance	7 (AATCC-175-2003)
Static Control	Pass - Max. 4 kV (AATCC 134-1996)
Tuft Bind	Pass - 3.3 lbs (ASTM-D-1335)
Dimensional Stability	Pass - Max. 0.1% change (AACHEN)
Indoor Air Quality	CRI Green Label Plus
Flammability	
- Pill Test	Pass - 8 (ASTM-D-2859-96)
- Radiant Panel	Pass - Class I (ASTM-E-2648-10)
- Smoke Density	Pass - Max. 450 (ASTM-E-662-06)
Colourfastness	
- to light	Excellent - 5 (AATCC-16E)
- to wet & dry crocking	Excellent - 5 (AATCC-165)
- to Ozone	Excellent - 5 (AATCC-129)
Total Recycled Content	20% (By Weight)

Warranties

- 10 Year Carpet Wear Warranty
- Lifetime Antishock Carpet Warranty

The subfloor should be dry, smooth, flat, dust-free and resistant to compression and load-bearing. Where seaming is necessary, a seam sealant must be used for all such installations. Due to dye lot variations, actual material may vary slightly from the samples. Chair pads are recommended to prevent premature wear of carpet.

Ideal for Contract Use.

Elegance & Comfort in Modern Living

502 BURGUNDY & 367 MEDIUM BEIGE

