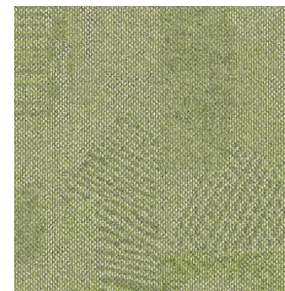


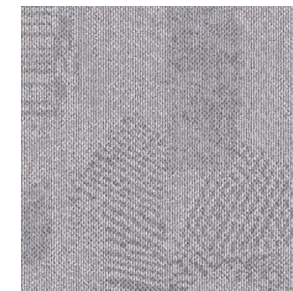
## CHALKHILL SQ



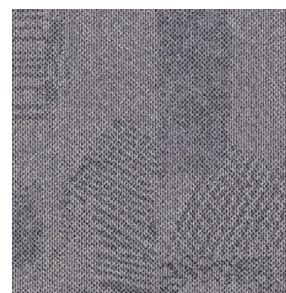
Walnut Timber



Green Pasture



Foggy



Grey Lava

### Specifications

Construction	1/12" Tufted Multi-Level Pattern Loop Pile
Yarn	100% Solution Dyed Nylon 6,0
Pile Weight	18 oz/yd <sup>2</sup>
Total Thickness	6.00mm
Backing	ComfortBac V2
Tile Size	50cm x 50cm
Packing	20 pcs per box (5m <sup>2</sup> )

### Performance

Radiant Panel	ASTM E 648 Class 1
Smoke Density	ASTM E662 Less than 450
Static Propensity	AATCC 134 Less than 3.5KV
Colour Fastness to Light	AATCC 16E ≥4
Dimension Stability	AACHEN ≤0.2%
Foot Traffic Recommendation	Heavy Commercial
Antimicrobial	Health Guard
Certificates	Singapore Green Label Certification Singapore Green Building Product Certification (4 ticks)

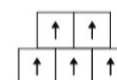
### Recommended Installation Method



1/4 Turn



Ashlar



Brick



039-017-2094  
Environmentally  
Preferred Carpet