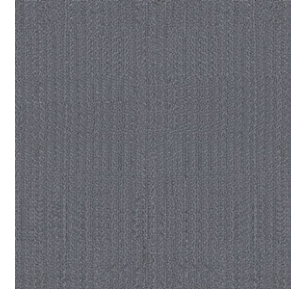




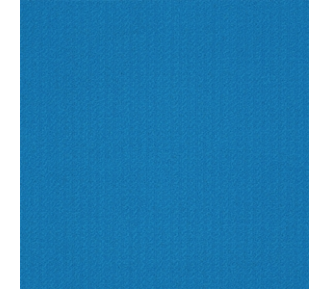
COLORBOX II SQ



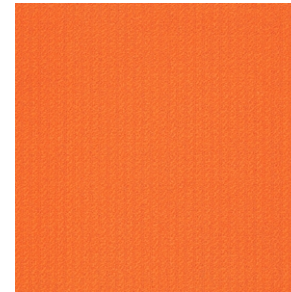
Blind Light



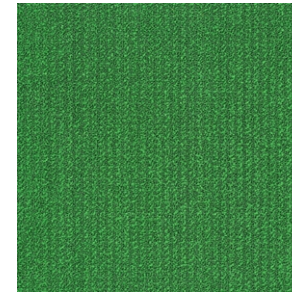
Elephant Grey



Fresh Blue



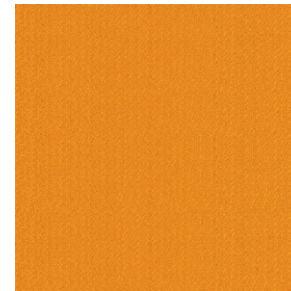
Fresh Orange



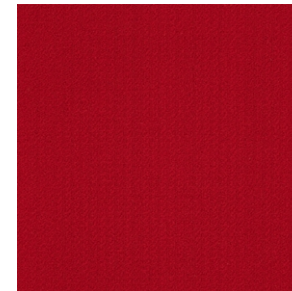
Green Foliage



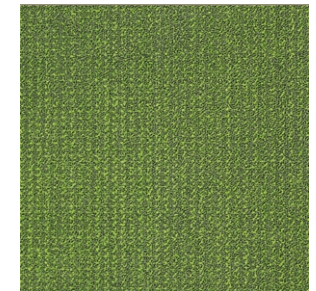
Ocean Deep



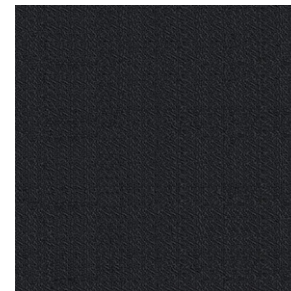
Orange Peel



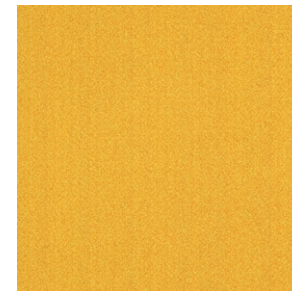
Red Dot



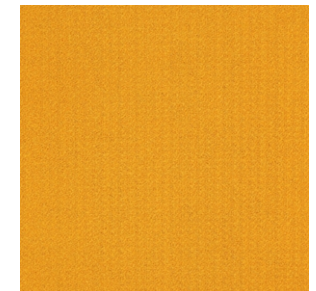
Salad Green



Striking Black



Yellow Ribbon



Yellow Sun

Specifications

Construction	1/12" Solid Color Multi-Level Loop Pile
Yarn	100% Invista Nylon
Pile Height	23 oz/yd ²
Total Height	7.0m
Backing	FlexiBac
Tile Size	50cm x 50cm
Packing	20 pcs per box (5m ²)

Performance

Wear Classification	Heavy Commercial
Radiant Panel	ASTM E648 Class 1
Smoke Density	ASTM 662 Less than 450
Static Propensity	AATCC 134 Less than 3.5Kv
Color Fastness to Light	AATCC 16E ≥4
Dimension stability	AACHEN ≤0.2%
Antimicrobial	Health Guard
Certificates	Singapore Green Label Certification Singapore Green Building Product Certification (4 ticks)

Recommended Installation Method



1/4 Turn



Ashlar



Brick



039-017-2094
Environmentally Preferred Carpet