



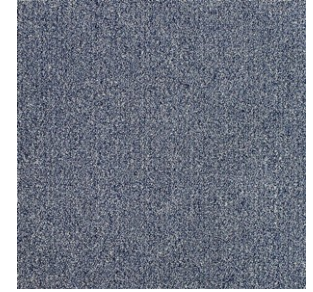
CONCEPT LOOP SQ



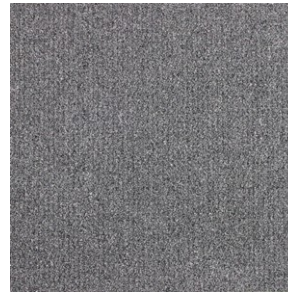
Latte Jelly



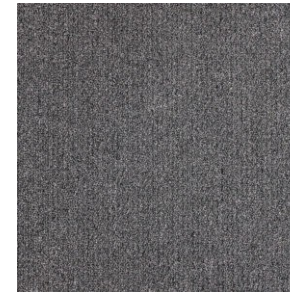
Likely Blue



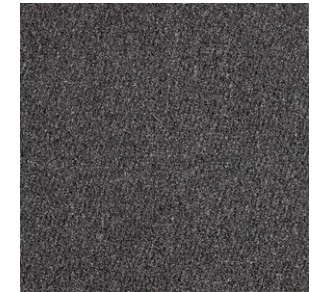
Blue Screen



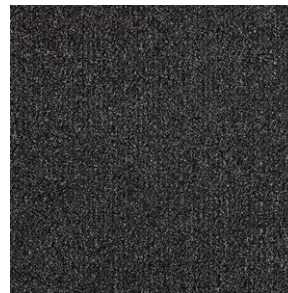
Steel Can



Cast Iron



Matt Black



Black Tag

Specifications

Construction	1/12" Tufted Textured Loop Pile
Yarn	100% Solution Dyed Premium Nylon
Pile Weight	21 oz/yd ²
Total Thickness	7.2mm
Backing	FlexiBac
Tile Size	50cm x 50cm
Packing	20 pcs per box (5m ²)

Performance

Radiant Panel	ASTM E 648 Class 1
Smoke Density	ASTM E662 Less than 450
Static Propensity	AATCC 134 Less than 3.5KV
Colour Fastness to Light	AATCC 16E ≥4
Dimension Stability	AACHEN ≤0.2%
Foot Traffic Recommendation	Heavy Commercial
Antimicrobial	Health Guard
Certificates	Singapore Green Label Certification Singapore Green Building Product Certification (4 ticks)

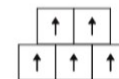
Recommended Installation Method



1/4 Turn



Ashlar



Brick



039-017-2094
Environmentally Preferred Carpet