

MADE
IN
BELGIUM

MODULYSS
FIRST DEFINE
CARPET TILES

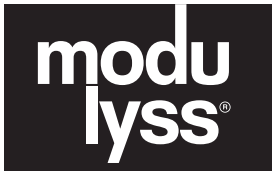


625 DARK GREEN
957 MID GREY



Monolithic

**modu
lyss®**



HELPING YOU MEET GREEN BUILDING STANDARDS

Sustainable or ‘green’ building is becoming increasingly important. We all need to find ways to use our resources more efficiently, while creating more healthy, energy-efficient and sustainable spaces and buildings. Green building standards, codes and certification systems guide you in how to design and build ‘green’. And whereas these standards were once mainly optional, they are increasingly becoming a strong requirement. Lucky for you, modulyss is here to help.

Our contribution

With its products and collaborations across the value chain, modulyss contributes positively to the following Sustainable Development Goals:



How it works

A member of the modulyss team comes on site to check whether the carpet tiles are eligible for processing.

The carpet tiles are removed by the contractor and separated from other demolition materials.

The tiles are placed on disposable pallets and collected by Vanheede Environment Group.

After an entrance check, the carpet tiles are mixed with other non-recyclable and chlorine-free highly caloric materials and processed into pellets.

The pellets are then converted into sustainable energy.

After the durable processing of the carpet tiles you receive a sustainable solution certificate of Vanheede Environment Group.

Products & operations



Collaborations & value chain



We CARE

Thanks to CARE, life-expired polyamide carpet tiles are sustainably recycled into regenerated raw materials and secondary fuel. The minerals are extracted from the carpet tiles and recycled into raw material for the cement production industry, which results in 50% recycling of our carpet tiles. The rest is converted into pellets for industrial furnaces. This means that much less fossil fuel is used.



965 DARK GREY



The randomised texture of concrete is mimicked in the expressive pattern of First Define. Available in 11 colours, First Define's colour palette includes tones of grey, beige, blue and black to bright and bold reds, yellows, oranges and greens.

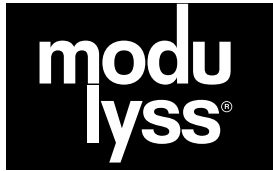




061 LIGHT BEIGE



Monolithic



FIRST DEFINE

LIGHT REFLECTANCE VALUE

Light Reflectance Value (LRV) is the total quantity of visible and usable light that is reflected by a surface (e.g. flooring, walls, furniture, ...) in all directions and at all wavelengths when illuminated by a light source.

LRV is a measurement that indicates how much light a surface **reflects**, and conversely how much it **absorbs**. LRV runs on a scale from 0% to 100%, 0% being a perfectly absorbing surface (black) up to 100% being a perfectly reflective surface (white). Additional to the colour of the surface, structure and gloss are factors that influence the light reflectance value.

The LRV certificates of all modulyss® products are awarded by **CSTB** which executes the measurement according to the **EN 410** and **EN 14500** standard.

The **L-value**, which is the colour depth, is used to calculate visual contrast. However this should not be mixed up with the LRV as the L-value is significantly higher. This is tested in accordance with the **EN ISO 11664-4** standard.

Light Reflectance Values

COLOR	LRV	L
061	27	59
140	12	41
210	17	48
322	8	35
329	4	25
573	5	26
625	7	31
914	25	57
957	19	46
965	6	29
995	3	20



573 DARK BLUE



Projects

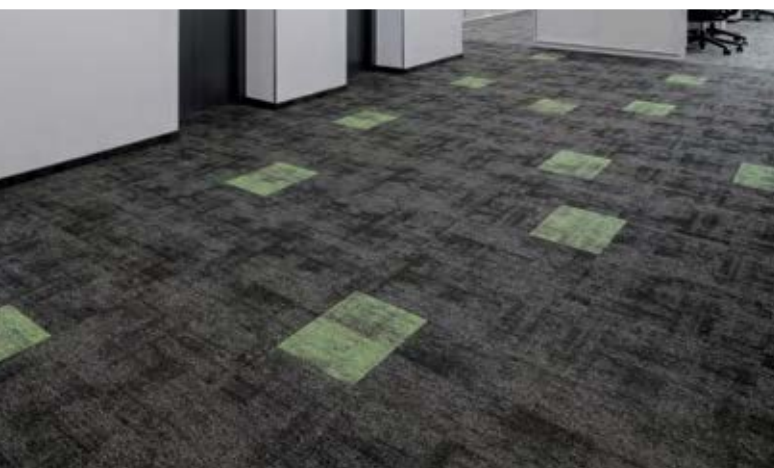


Ghelamco Box | Belgium
995 Anthracite



Projects

Dino Polska S.A. | Poland
322 Orange, 625 Dark Green,
965 Dark Grey, 995 Anthracite



FIRST DEFINE

SWATCHES

In Tile size 50cm x 50cm



061 LIGHT BEIGE



140 DARK BEIGE



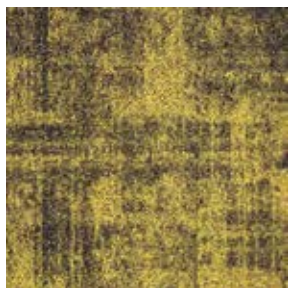
061 LIGHT BEIGE
140 DARK BEIGE
329 RED



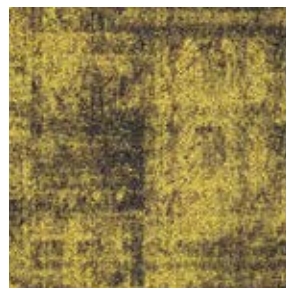
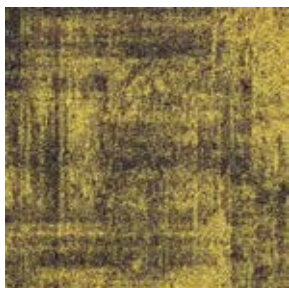
Monolithic

FIRST DEFINE

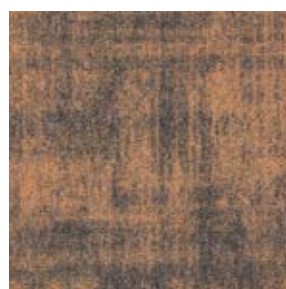
SWATCHES



210 YELLOW



322 ORANGE



329 RED



573 DARK BLUE



625 DARK GREEN



In Tile size 50cm x 50cm



914 LIGHT GREY



957 MID GREY



965 DARK GREY



995 ANTHRACITE

Scan QR code to view
Carpet Tiles Maintenance Guide



FIRST DEFINE

modu
lyss®

Specifications

Construction	Tufted 1/12" Loop
Yarn Composition	100% modulyss Solution Dyed Nylon
Secondary Backing	Back2Back: Premium carpet tile backing with minimum 75% post-industrial recycled content
Tufted Pile Weight	Ca. 590 g/m ² (+/- 10%)
Total Weight	Ca. 4500 g/m ² (+/- 10%)
Pile Above Backing	Ca. 360 g/m ² (+/- 10%)
Pile Height	Ca. 2.9 mm (+/- 10%)
Total Height	Ca. 6.5 mm (+/- 10%)
Pile Density	Ca. 0.124 g/m ³
Tuft Density	Ca. 202,000 g/m ²
Tile Size	50 cm x 50 cm
Packing	20 pcs per box (5 m ²)

Performance

Indoor Air Quality (V.O.C.)	Pass - No V.O.C Detected (ASTM-D5116-10)
Fire Resistance	Bfl-s1 (EN 13501-1)
Fastness To Light	> 7 (ISO 105-B02)
Rubbing Fastness	≥ 4 (EN ISO 105-X12)
Colour Fastness To Water	≥ 4 (EN ISO 105-E01)
Thermal Resistance	0.066 m ² K/W (ISO 8302)
Impact Noise Rating	ΔL: 25 dB (ISO 10140)
Sound Absorption	α _w 0.15 (ISO 354)
	Hz 125 250 500 1000 2000 4000
	α _s 0.02 0.02 0.06 0.15 0.27 0.34
Permanent Anti-static	≤ 2 kV (ISO 6356)
Transversal Resistance	≤ 10 ⁹ Ohm (ISO/DIS 10965)
Dimensional Stability	Max. 0.2 % (EN 986)
Castor Chair Suitability	A : continuous use (EN 985)
Classification	33 - LC1 (EN 1307)
GUT-NR	68E92E25
Données Environnementales	Démarche HQE® : cf. FDES suivant NF P01-010 Déclaration du 30/07/2003
LEED®	Product contributes toward satisfying Credits 4.3 under LEED®. Products are not reviewed under LEED®, LEED® credit requirements cover the performance of materials in aggregate, not the performance of individual products of brands. For more information on LEED®, visit www.usgbc.org/ contact
Green Certificates	Singapore Green Building Council (SGBC) - ✓✓✓✓ Leader
Total Recycled Content	CRI Green Label Plus
	50% (By Weight)

Warranties

20 Year Carpet Wear Warranty
Lifetime Anti-Static Shock Warranty
Ideal for Heavy Contract Use.

The subfloor should be dry, smooth, flat, dust-free and resistant to compression and load-bearing. Where seaming is necessary, a seam sealant must be used for all such installations. Due to dye lot variations, actual colour may vary slightly from the samples. Chair pads are recommended to prevent premature wear of carpet.

Installation Methods



MADE IN BELGIUM



MODULYSS **FIRST DEFINE**
CARPET TILE