

MELODY 8

CARPET TILES

100% SOLUTION DYED POLYPROPYLENE



8015 GREY FERN
8016 GREEN FERN

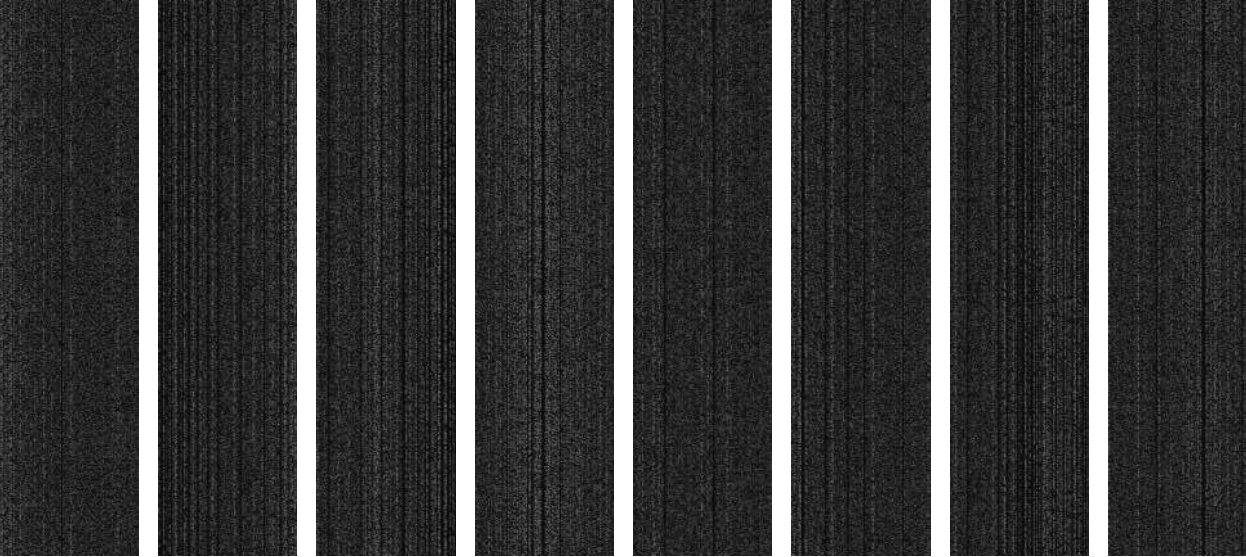


8011 GREY CHERRY
8013 GREY SAPPHIRE
8015 GREY FERN
8017 GREY PUMPKIN

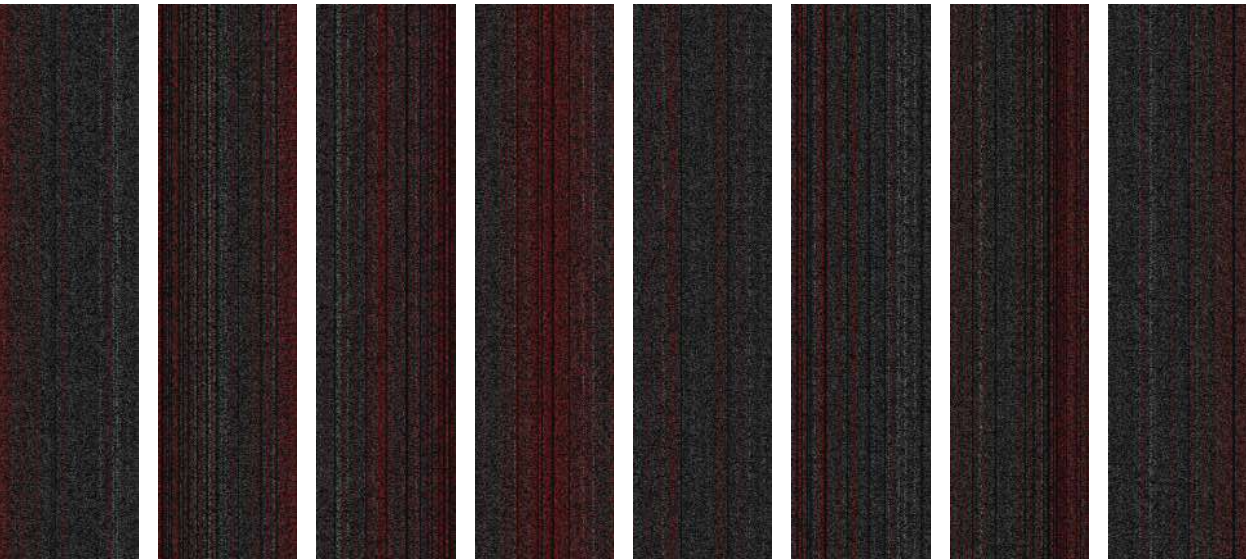
MELODY 8

SWATCHES

8011 GREY CHERRY

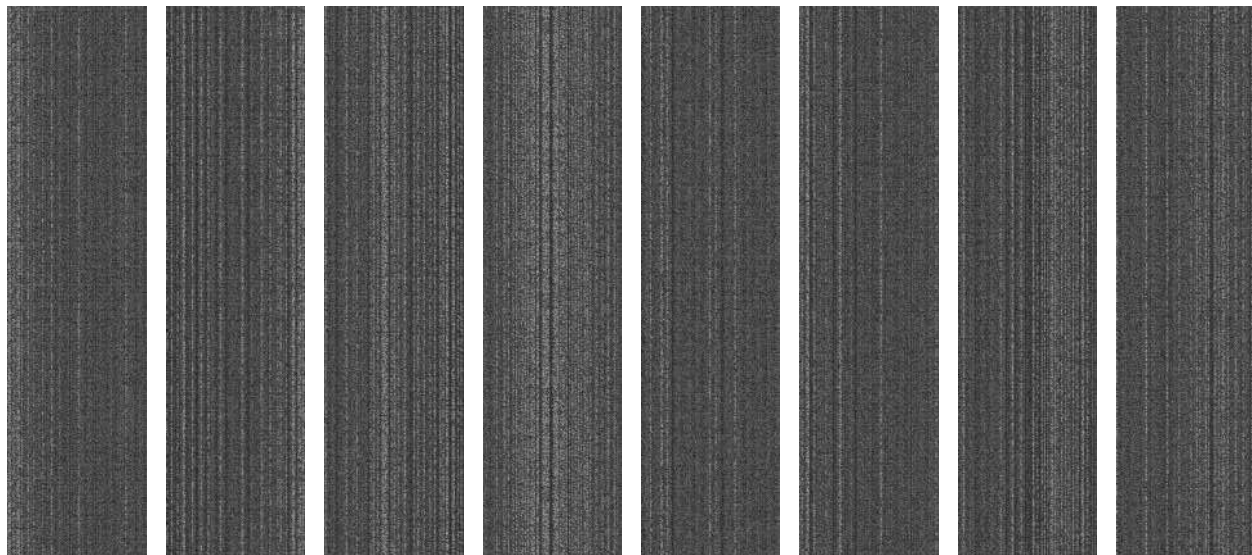


8012 RED CHERRY

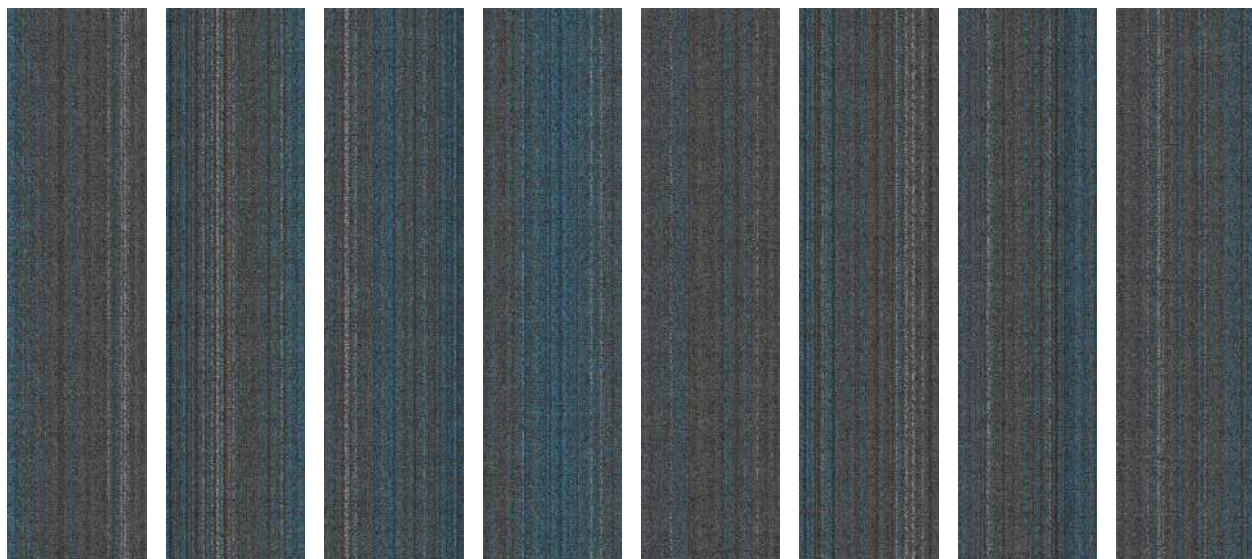


In Plank size 25cm x 100cm

8013 GREY SAPPHIRE



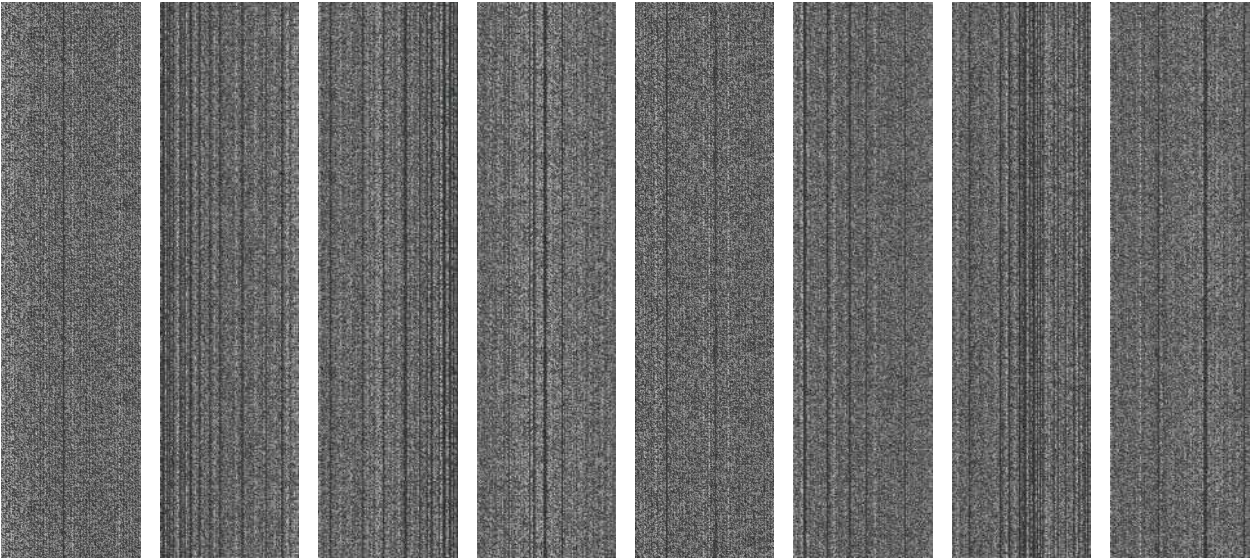
8014 BLUE SAPPHIRE



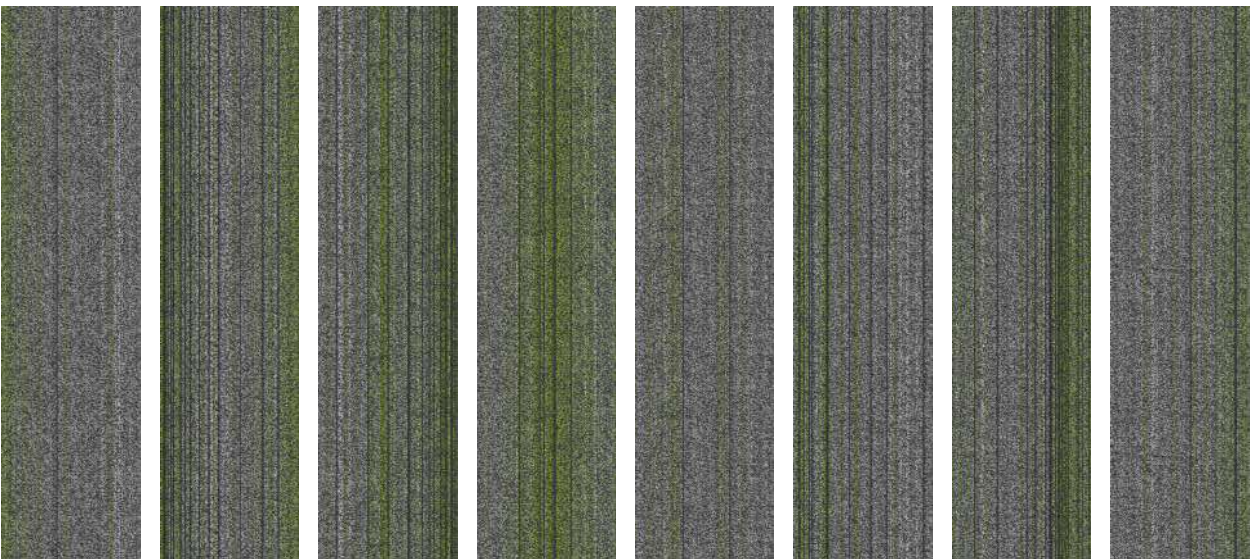
MELODY 8

SWATCHES

8015 GREY FERN

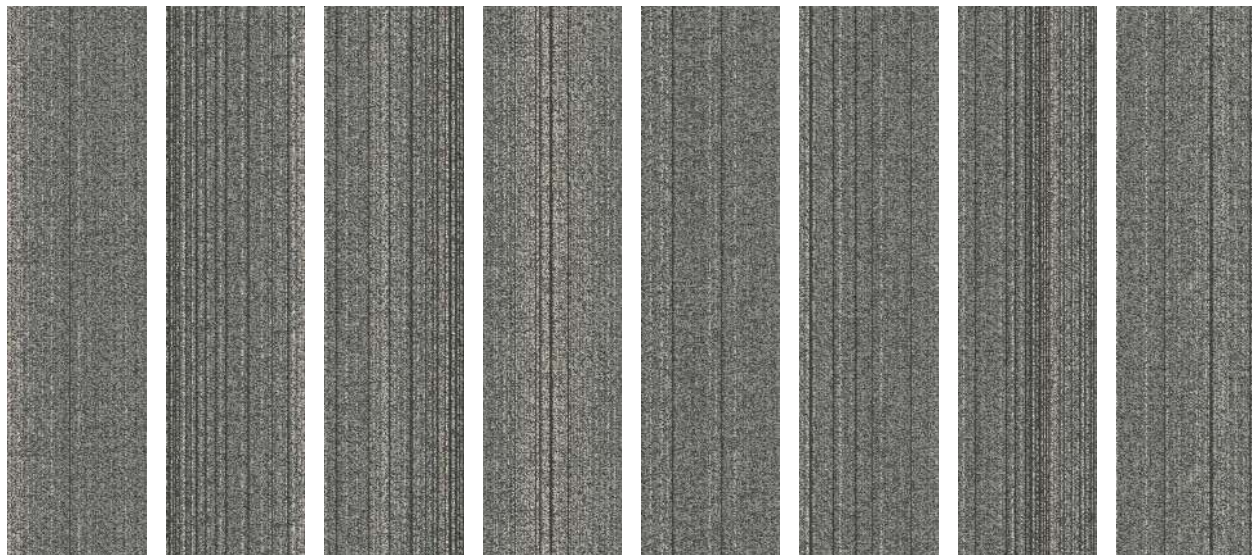


8016 GREEN FERN



In Plank size 25cm x 100cm

8017 GREY PUMPKIN



8018 ORANGE PUMPKIN



• 100% Solution Dyed Polypropylene •

• Anti-Static •

• eBac+ •

• Flame-Retardant •

MELODY 8 Specifications

Construction	1/10" Level Loop Pile
Yarn Composition	100% Solution Dyed Polypropylene
Tufted Pile Weight	Ca. 542 g/m ² (16 oz/yd ²) (+/- 10%)
Total Weight	Ca. 3000 g/m ² (88 oz/yd ²) (+/- 10%)
Pile Height	Ca. 3 mm (+/- 0.5 mm)
Total Height	Ca. 5 mm (+/- 0.5 mm)
Density (APYD)	4,872 ozs/yd ³
Tuft Density	109,982 stitches/m ²
Stitch Rate	43.3 per 10 cm
Backing	eBac+
Plank Size	25 cm x 100 cm
Packing	20 pcs per box (5 m ²)

Performance

(as tested by ITTS Inc. USA)

Stain Resistance	10 (AATCC-175-2003)
Static Control	Pass - Max. 4 kV (AATCC-134-1996)
Tuft Bind	Pass - 8.8 lbs (ASTM-D-1335)
Dimensional Stability	Pass - Max. 0.1% change (AACHEN)
Indoor Air Quality (V.O.C.)	Pass - No VOC Detected (ASTM-D5116-10)
Impact Noise Rating	ΔL: 26 dB (ISO 10140)
Sound Absorption	αw 0.20 (ISO 354) Hz 125 250 500 1000 2000 4000 αs 0.01 0.03 0.08 0.28 0.35 0.43

Flammability	
- Radiant Panel	Pass - Class I (ASTM-E-648-06)
- Pill Test	Pass - 8 (ASTM-D-2859-06)
- Smoke Density	Pass - Max. 450 (ASTM-E-662-06)
Colourfastness	
- to light	Excellent - 5 (AATCC-16E)
- to wet & dry crocking	Excellent - 5 (AATCC-165)
- to ozone	Excellent - 5 (AATCC-129)

Warranties

10 Year Carpet Wear Warranty
Lifetime Anti-shock Carpet Warranty

Ideal for Medium Contract Use.

The subfloor should be dry, smooth, flat, dust-free and resistant to compression and load-bearing. Where seaming is necessary, a seam sealant must be used for all such installations. Due to dye lot variations, actual color may vary slightly from the samples. Chair pads are recommended to prevent premature wear of carpet.

Environment

The design and production of Melody 8 Tile conforms to the ISO 14001:2004 Environmental Management System and complies with environmental regulations.

As a responsible manufacturer and to minimize our carbon footprint, a majority of our excess production materials are recycled in-house resulting in a minimum of 10% recycled content in our tile backing. Melody 8 Tile does not contain any PVC in its manufactured materials and packaging.

Melody 8 Tile is an environmentally friendly "green" carpet.

Installation Method



Ashlar & Monolithic Herringbone Ashlar



MELODY8
CARPET TILE