

MYSTIC 4

CARPET TILES











- **100% Solution Dyed Olefin** •
- **Stain-Resistant** •
- **Anti-Static** •
- **Flame-Retardant** •





MYSTIC 4

SWATCHES



4151 BOBBY BLUE



4152 MERRY GREEN



4153 LIGHT PEACH



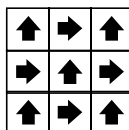
4154 DEEP ORANGE



4155 VELVET RED



4156 CHROME YELLOW



Quarter-Turn Only



Installation Method



Quarter-Turn
Only



MYSTIC 4 Specifications

Construction	1/10" Level Loop Pile
Yarn Composition	100% Solution Dyed Polypropylene
Tufted Pile Weight	Ca. 577 g/m ² (17 oz/yd ²) (+/- 10%)
Total Weight	Ca. 2440 g/m ² (72 oz/yd ²) (+/- 10%)
Pile Height	Ca. 3 mm (+/- 0.5 mm)
Total Height	Ca. 5 mm (+/- 0.5 mm)
Density (APYD)	5,186 ozs/yd ³
Tuft Density	121,920 stitches/m ²
Stitch Rate	48 per 10 cm
Backing	eBac+
Tile Size	50 cm x 50 cm
Packing	20 pcs per box (5 m ²)

Performance

(as tested by ITTS Inc. USA)

Stain Resistance	10 (AATCC 175-2003)
Static Control	Pass - Max. 4 kV (AATCC-134-1996)
Tuft Bind	Pass - 9.8 lbs (ASTM-D-1335)
Dimensional Stability	Pass - Max. 0.1% change (AACHEN)
Indoor Air Quality (V.O.C.)	Pass - No VOC Detected (ASTM-D5116-10)
Impact Noise Rating	ΔL: 26 dB (ISO 10140)
Sound Absorption	αw 0.20 (ISO 354) Hz 125 250 500 1000 2000 4000 αs 0.01 0.03 0.08 0.28 0.35 0.43
Flammability	
- Radiant Panel	Pass - Class I (ASTM-E-648-06)
- Pill Test	Pass - 8 (ASTM-D-2859-96)
- Smoke Density	Pass - Max. 450 (ASTM-E-662-06)
Colourfastness	
- to light	Excellent - 5 (AATCC-16E)
- to ozone	Excellent - 5 (AATCC-129)
- to wet & dry crocking	Excellent - 5 (AATCC-165)

Warranties

10 Year Carpet Wear Warranty
Lifetime Anti-shock Carpet Warranty
Ideal for Medium Contract Use.

The subfloor should be dry, smooth, flat, dust-free and resistant to compression and load-bearing. Where seaming is necessary, a seam sealant must be used for all such installations. Due to dye lot variations, actual color may vary slightly from the samples. Chair pads are recommended to prevent premature wear of carpet.

Environment

The design and production of Mystic 4 Tile conforms to the ISO 14001:2004 Environmental Management System and complies with environmental regulations.

As a responsible manufacturer and to minimize our carbon footprint, a majority of our excess production materials are recycled in-house resulting in a minimum of 10% recycled content in our tile backing. Mystic 4 Tile does not contain any PVC in its manufactured materials and packaging.

Mystic 4 Tile is an environmentally friendly "green" carpet.

Suitable

Mystic 4 is an extremely affordable yet strong and durable carpet tile that fully meets the needs of today's competitive office environment.

Due to the solid colourations of Mystic 4, the edge lines may be visible if planks of the same colour are joined next to each other. The visible edge lines are an inherent characteristic of the plank and not a defect, just as one can also see the edge lines when joining wood planks or PVC planks.

If the visual effect of the edge lines is required to be minimised, we recommend installing planks of different and contrasting colours next to each other, as can be seen in our illustrations.