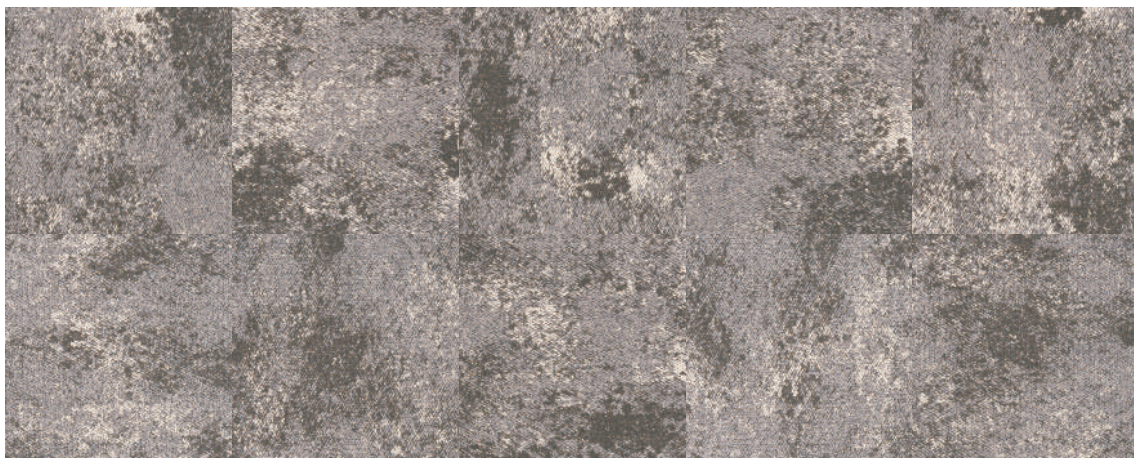
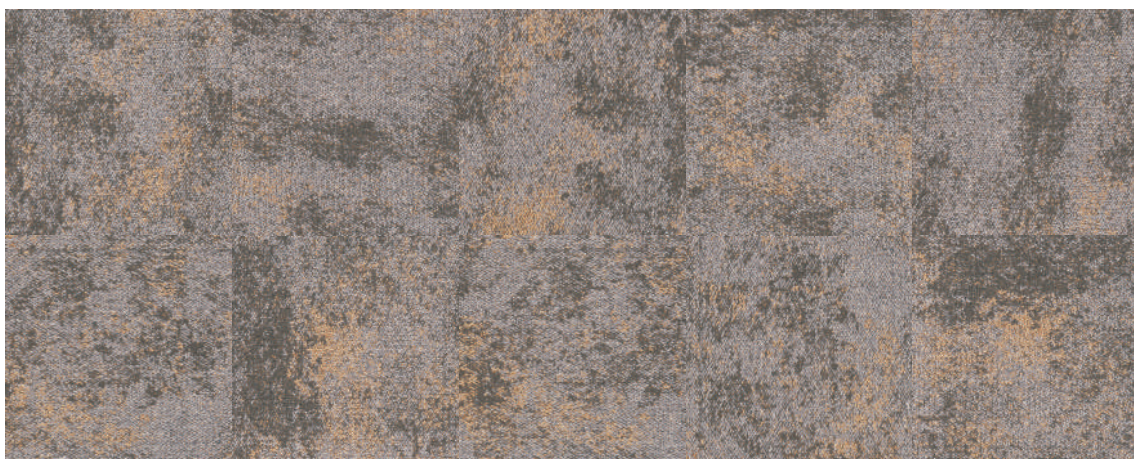


## Rainbow Earth Comfort (Tile Series)

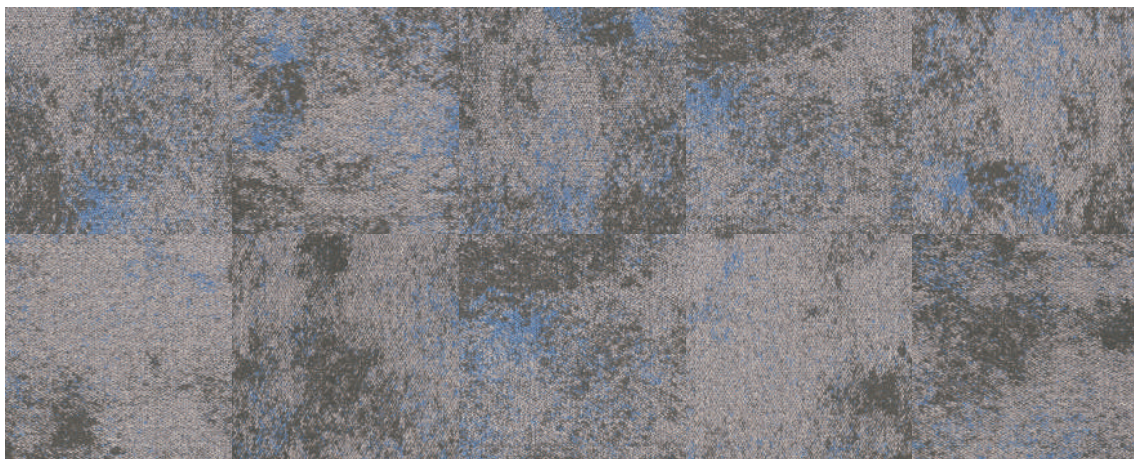




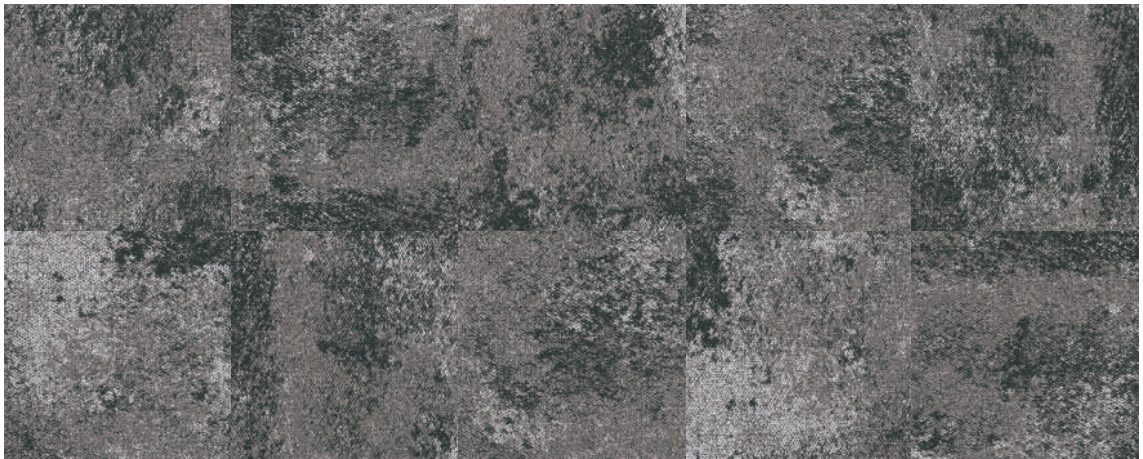
RE 8912 GRIGIO



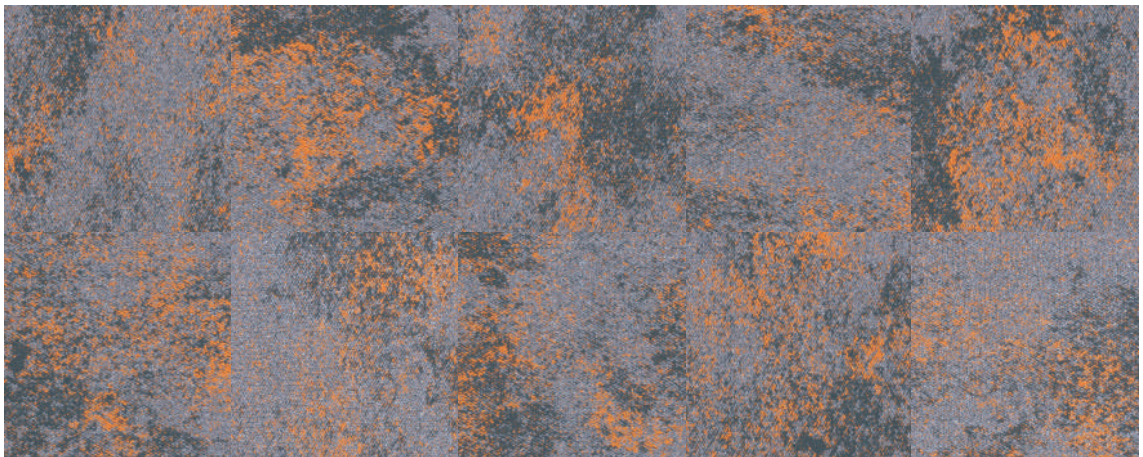
RE 8973 GIALLA



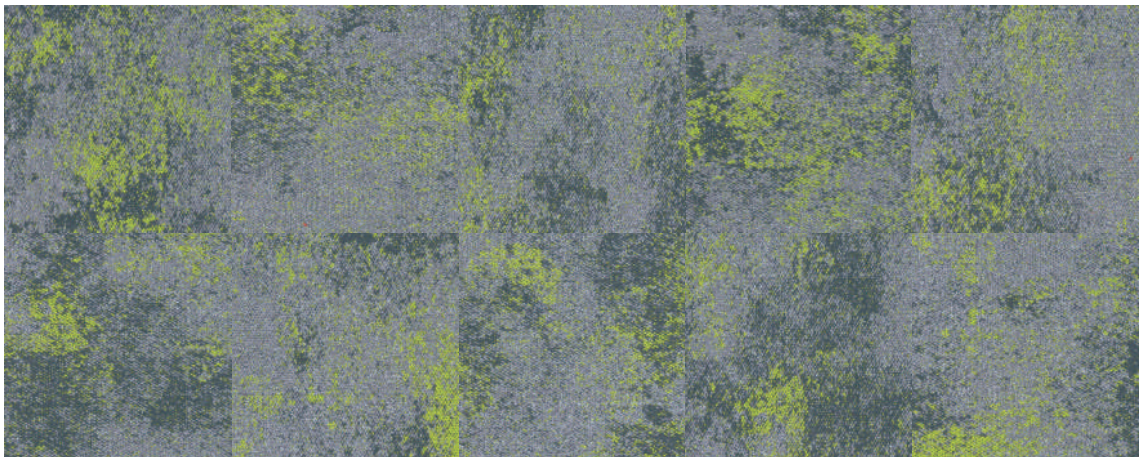
RE 8926 AZURE



RE 8935 SCURO



RE 8950 ARANCIA



RE 8968 VERDE

## Technical Specification :

Product Identification :.....	<b>RAINBOW EARTH COMFORT</b>
Constructional Process :.....	Multi-Level Loop
Manufacturing Method :.....	Tufted
Colour System :.....	Solution Dyed Yarn
Yarn Weight :.....	16 oz/sq.yd ( 550 gsm )
Pile Height :.....	3.5 - 4.5 mm
Yarn Content :.....	100% Polypropylene
Total Height :.....	9.0 mm
Gauge :.....	1/12"
Primary Backing :.....	Non - Woven Synthetic
Tile Backing :.....	Bitumen + 700g Non - Woven Fabric
Tile Size :.....	500 x 500 mm
Packing :.....	16 Pieces Per Carton ( 4m <sup>2</sup> )

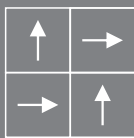
## Performance Characteristics :

- Solution dyed fibres enable colour retention throughout the useful life of the carpet.
- Polypropylene fibres possess good colourfastness properties.
- The polypropylene yarn are antistatic and can therefore be aptly deployed in work environment where antistatic properties are required.
- The polypropylene fibres are antimicrobial and antibacterial which inhibit the growth of microorganisms such as bacteria and fungi.
- The inherent polypropylene resistance to moisture absorption permits spills and stains to be quickly removed.

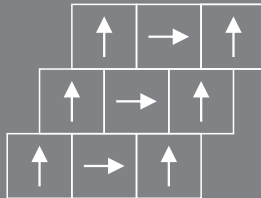
Warranty :.....	2 Years Limited Warranty
Usage :.....	Commercial Applications

Note : Colour from another production lot is subject to dye lot variation.

## Recommended Installation:



Quarter Turn



Brick Quarter